



FAT DRAGON GAMES

Copyright ©2009 Fat Dragon Games™
All rights reserved.
www.fatdragongames.com

Cut solid lines

Score/fold dotted lines

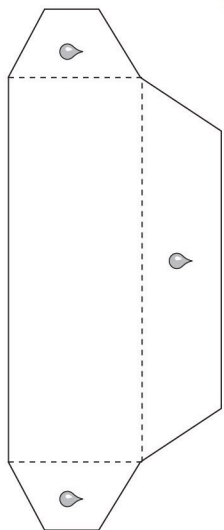
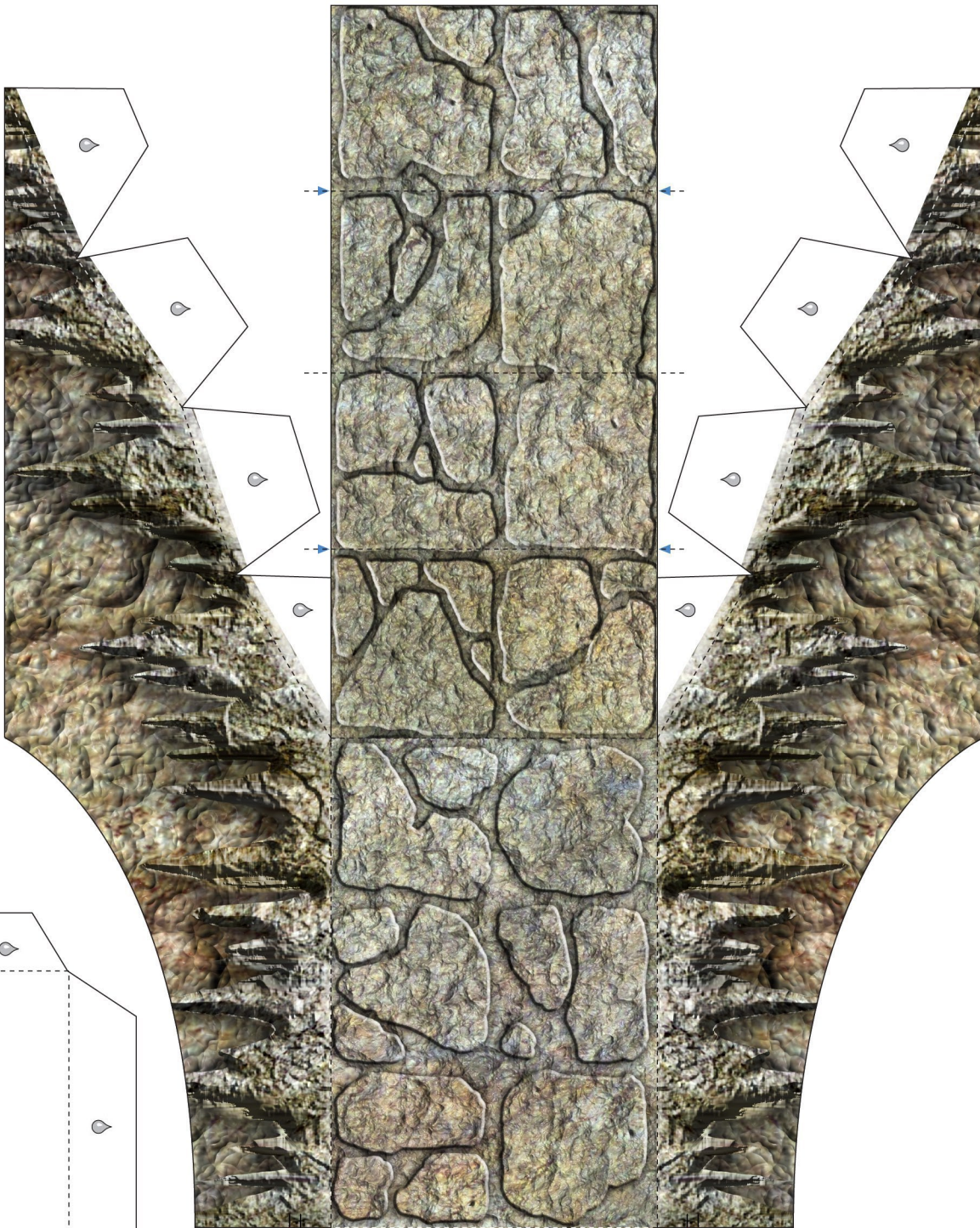
Score/fold on reverse side

Cut out

Glue this area



PLEASE DO NOT SHARE FILES
Piracy kills small businesses like FDG.
Help us keep our doors open and
making new models for you!



If you wish to use hairpins to temporarily connect your bridge segments, cut small openings (square) where denoted by the red lines (the red lines are not for cutting, but rather to help you see the black cut lines on the rock texture.)