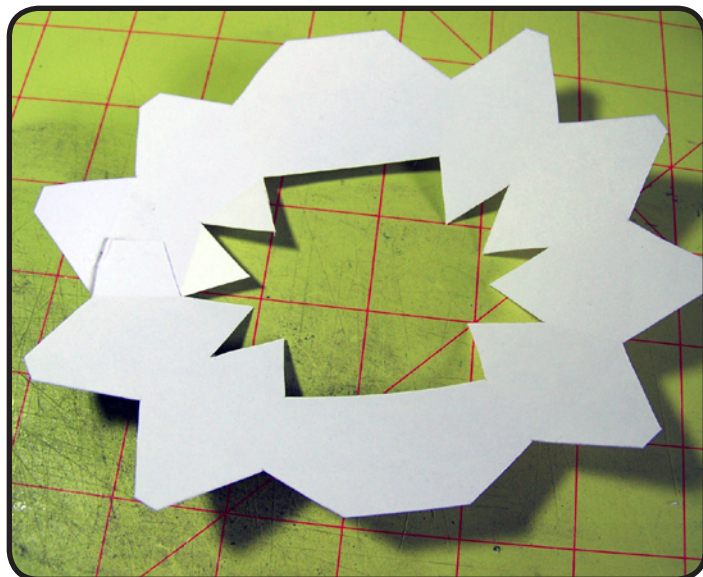


# E-Z DUNGEONS

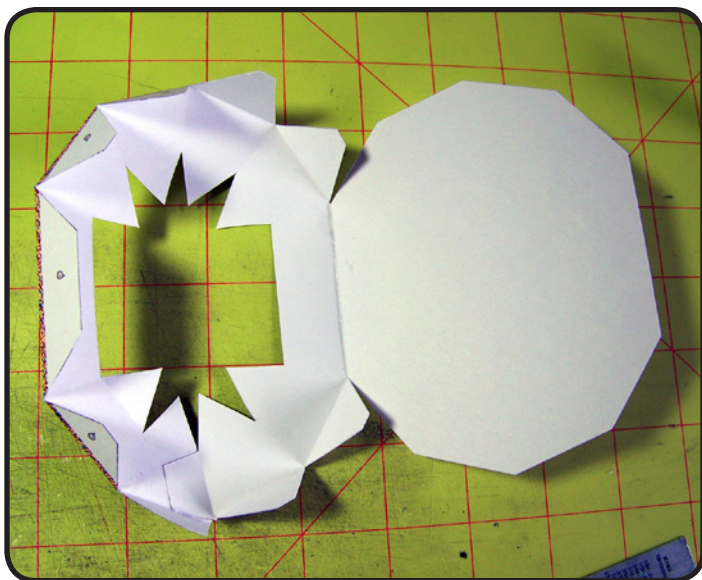
## 3D Treasure Pile



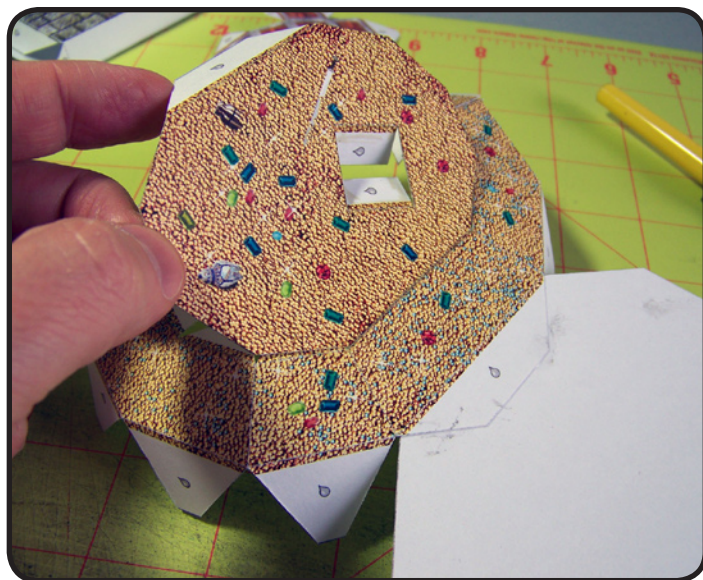
Cut, score and test fold the three pieces of the model as shown above.



Glue the main body into a ring and allow to dry.

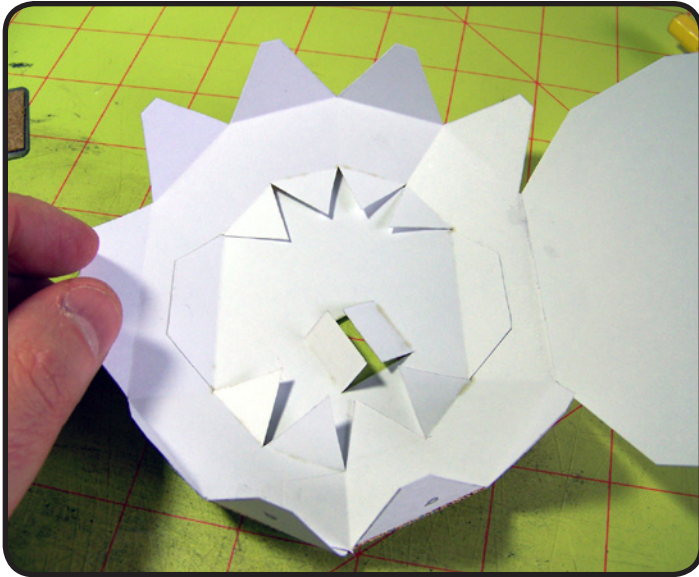


Attach one flap of the bottom and allow to fully dry, making sure it is correctly aligned to it will fold shut properly later.

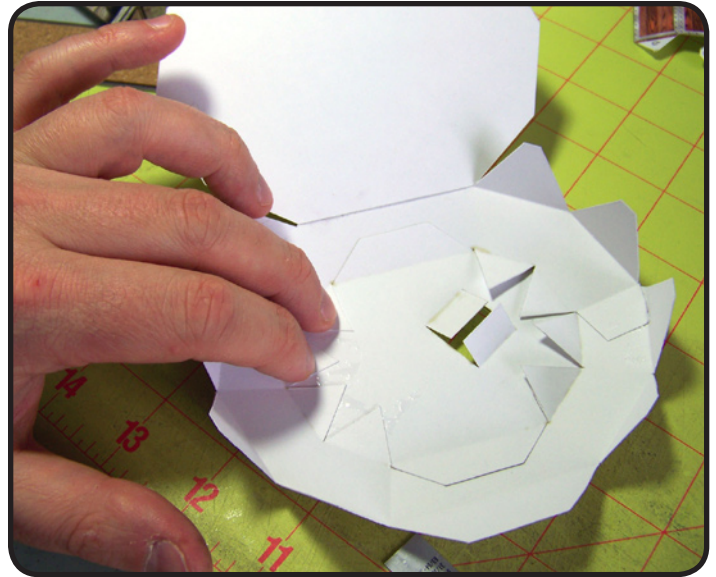


Start attaching the top section by gluing one of the large side tabs first and allowing to fully dry before proceeding.

# E-Z DUNGEONS



Glue the opposite large tab and allow to dry.



Glue the remaining tabs for the top piece.



Glue the bottom flap into place and allow to fully dry.



Assemble the treasure chest and then insert into the opening in the top of the treasure model.